



Funded by
the European Union

EU4Environment
Water and Data in Eastern Partner Countries

THE FRENCH EXPERIENCE AND TOOLS FOR QUANTITATIVE MANAGEMENT

8 July 2024

Guillaume Poincheval, representative of local water management department in France

Implementing partners



Co-funded by

With funding from





Funded by
the European Union

EU4Environment
Water and Data in Eastern Partner Countries

KEY LEGISLATIVE DATE: A 60 YEARS REFORM JOURNEY

- Large basins approach with the creation of 6 water agencies and 6 basin committees
- Setting up of the user pay and polluter pay principles

Water repartition and fighting pollution law
16/12/1964

Water law
3/01/1992

- Creation of large basin and sub-basin plans **SDAGE, SAGE**
- Creation of water lists and procedures for permitting activities
- Definition of priority areas for reducing of water over use (**ZRE**)

- 2004 WFD transposition to target the good status

- 2006 :
« abstractable volume » & Collective water permit*

Water and wet lands law
30/12/2006

*Creation of Exclusive Body for Collective Management (OUGC) with Multiyear Exclusive Permit (AUP) < abstractable volumes.

Ministerial instruction of 2008 and 2019

- 2008 : instruction on balanced quantitative management
- 2009-2015 & 2016-2021 : water agencies support the development of over 130 Local quantitative plans
- 2019 : State normalises and promotes the development of **PTGE**** (Water Management Territory Project)
- The Ministry publishes a guidance document this month

****PTGE**
(Projet de Territoire pour la gestion de l'eau)

implementing partners



Co-funded by





Funded by
the European Union

EU4Environment
Water and Data in Eastern Partner Countries

SCALES FOR QUANTITATIVE WATER MANAGEMENT

Planning

European WFD objectives implies
sound quantitative management
but no “tool orientated directive”
for scarcity as for flood directive - 2000



RBM Planning run by
6 River Basin Organisation
+ Financing Water
1964 (Agence de l'Eau)



Local quantitative management Plan
for actions & works
implementation with Water users
1992 (i.e. : SDAGE, SAGE)



Implementing partners

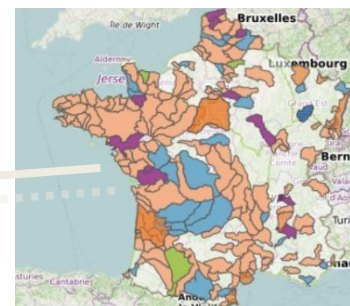


Co-funded by

With funding from



Prioritisation
per basin and
ground water
bodies



Operational
quantitative
management
plans at sub-basin
scale

Actions



Funded by
the European Union

EU4Environment
Water and Data in Eastern Partner Countries

QMP = WATER SCARCITY AND DROUGHT MANAGEMENT

**RBMB = identification of river basins
with structural deficit**

Studies of the abstractable volumes

**Notification of the results
to the local authority**

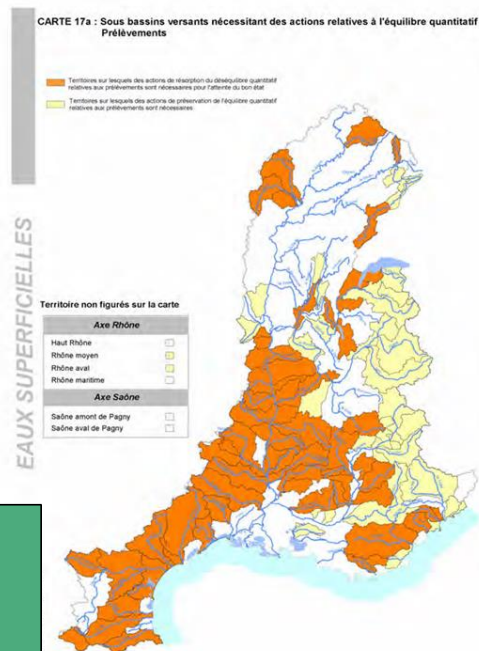
Territorial plans

Elaboration/implementation

- water savings
- water transfers
- water storage and new dams
- deep groundwater
- improvement of management

Legal actions

- identification of area of high structural deficit
- collective irrigation
- reserved flows
- update of rights according abstractable volumes



Implementing partners



Co-funded by

With funding from





Funded by
the European Union

EU4Environment
Water and Data in Eastern Partner Countries

WATER MANAGEMENT TERRITORY PROJECT (PTGE)

PHASING

- 1 – Sharing and improving knowledge
 - 2 – Drawing up objectives to improve water management
 - 3 – Building and validation of an action plan
- **Dialogue mode :**
Contribution – Coherence analysis by expert group – Discussion in reference group – Vote - Validation by steering committee ;
 - **Dialogue tools :**
Technical committee – Steering committee – Workshop – Reference group – « café » Debate - Public meeting...

Implementing partners



Co-funded by

With funding from





Funded by
the European Union

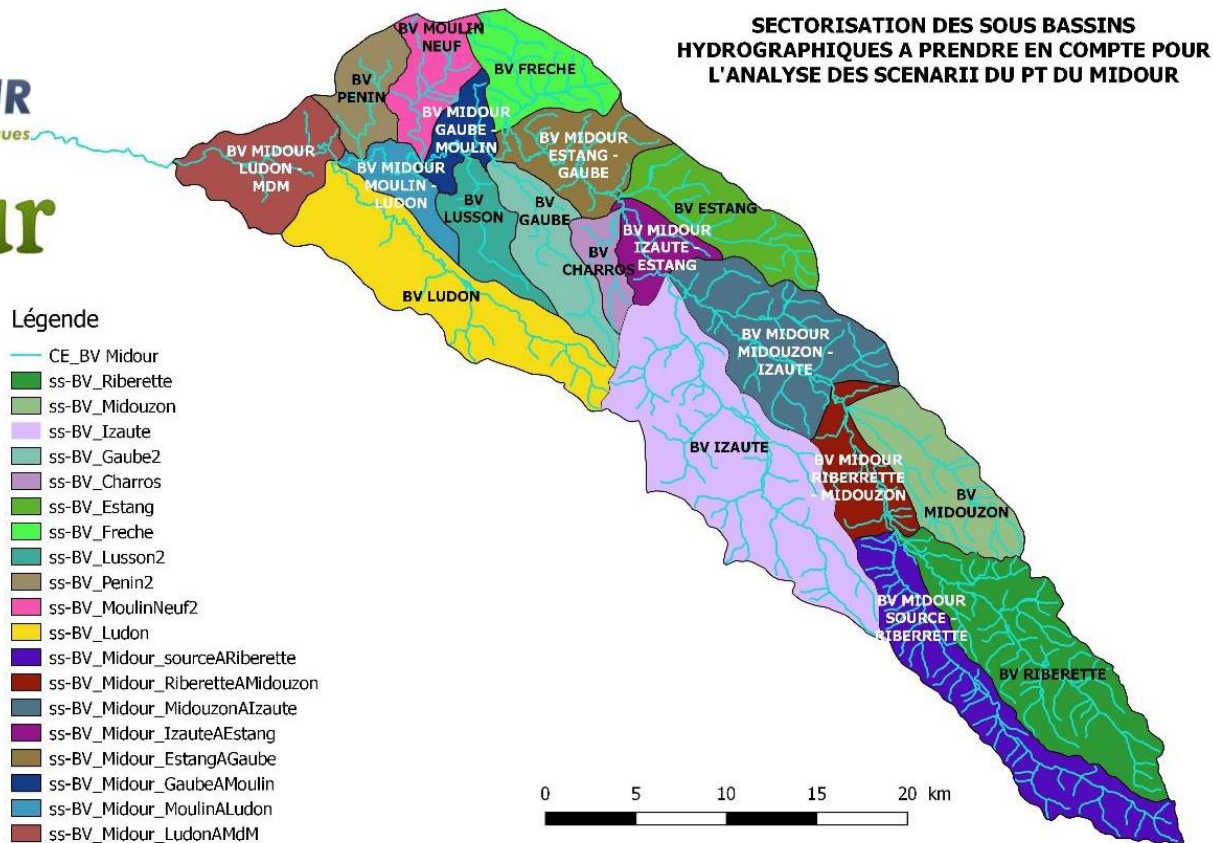
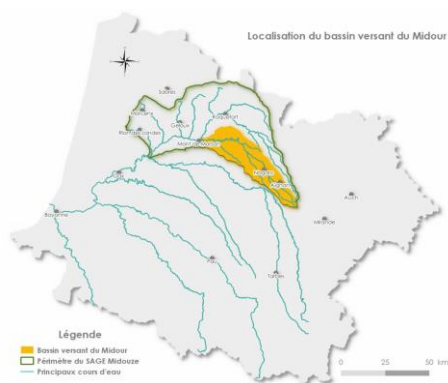
EU4Environment
Water and Data in Eastern Partner Countries

PHASE 1: KNOWLEDGE & STATE OF PLAY FOR DIAGNOSIS

Knowledge assessment, ownership, further studies, diagnosis of the situation, water balance



- Surface : 785 km²
- Population : 29 000 hab.



Implementing partners



Co-funded by

With funding from





Funded by
the European Union

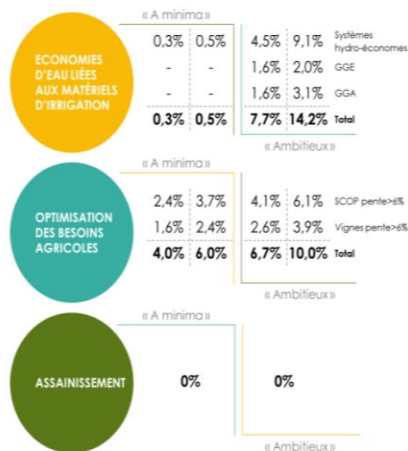
EU4Environment
Water and Data in Eastern Partner Countries

PHASE 2: OBJECTIVES: ELABORATION OF SCENARIOS OF EVOLUTION

Assumption of different scenarios

PROJET DE
TERRITOIRE DU **Midour**
INSTITUTION ADOUR
Hautes-Pyrénées - Gers - Landes - Pyrénées-Atlantiques

2050



SOLUTION A	SOLUTION B	SOLUTION C	SOLUTION D	SOLUTION E	SOLUTION F	SOLUTION G
REMPLEIR L'EXISTANT : POMPAGE COMPLEMENTAIRE NECESSAIRE						
POUR MARIBOT : 700 000 m³ - POUR LAPEYRIE : 400 000 m³ - POUR CHARROS : 600 000 m³ - POUR ARTHEZ : 400 000 m³						
+	Agrandissement RSE LAPEYRIE (1 à 2 m) 200 000 - 400 000 m³	Réhausse RSE LAPEYRIE (1 m) 200 000 m³	Réhausse RSE LAPEYRIE (1 m) 200 000 m³	Réhausse RSE MARIBOT (2 m) 500 000 m³	Réhausse RSE MARIBOT (1 m) 200 000 m³	Réhausse RSE MARIBOT (1 à 3 m) 200 000 - 400 000 m³
+			Réhausse RSE MARIBOT (1 à 2 m) 450 000 - 500 000 m³ 0 - 200 000 m³			
Création de retenues complémentaires 200 000 - 370 000 m³		Création de retenues complémentaires 0 - 150 000 m³			Création de retenues complémentaires 0 - 140 000 m³	
+	+	+	+	+	+	+
GERER LE RESTE DU DEFICIT HORS AXE MIDOUR - PAR EXEMPLE : CREATION DE RESERVOIRS / RETENUES COMPLEMENTAIRES						
AMB : SUR LE FRECHE (BV12) : 0 - 3 000 m³ - SUR LE LUSSON (BV13) : 250 000 - 280 000 m³ - SUR LE LUDON (BV 18) : 400 000 - 800 000 m³						
+	+	+	+	+	+	+
VALORISATION DES EAUX DE CONSOMMATION - REUT (COMPTANT COMME DES ECONOMIES D'EAU DANS LE SCENARIO AMBITIEUX) SUR LE LUDON : ~1,6 Mm³ - SUR LE LUSSON : ~ 200 000 m³ - SUR L'AXE MIDOUR A NOGARO : ~ 350 000 m³						
=	=	=	=	=	=	=
Volume TOTAL RSE	Volume TOTAL RSE	Volume TOTAL RSE	Volume TOTAL RSE	Volume TOTAL RSE	Volume TOTAL RSE	Volume TOTAL RSE
AMBITIEUX 2 100 000	AMBITIEUX 2 300 000	AMBITIEUX 2 300 000	AMBITIEUX 2 300 000	AMBITIEUX 2 600 000	AMBITIEUX 2 300 000	AMBITIEUX 2 300 000
(en m³)	(en m³)	(en m³)	(en m³)	(en m³)	(en m³)	(en m³)
Volume TOTAL Retenues complémentaire	Volume TOTAL Retenues complémentaire	Volume TOTAL Retenues complémentaire	Volume TOTAL Retenues complémentaire	Volume TOTAL Retenues complémentaire	Volume TOTAL Retenues complémentaire	Volume TOTAL Retenues complémentaire
AMBITIEUX 850 00	AMBITIEUX 650 000	AMBITIEUX 650 000	AMBITIEUX 650 000	AMBITIEUX 650 000	AMBITIEUX 650 000	AMBITIEUX 650 000
(en m³)	(en m³)	(en m³)	(en m³)	(en m³)	(en m³)	(en m³)
Volume TOTAL	Volume TOTAL	Volume TOTAL	Volume TOTAL	Volume TOTAL	Volume TOTAL	Volume TOTAL
AMBITIEUX 2 950 000	AMBITIEUX 2 950 000	AMBITIEUX 2 950 000	AMBITIEUX 2 950 000	AMBITIEUX 3 250 000	AMBITIEUX 2 950 000	AMBITIEUX 2 950 000
(en m³)	(en m³)	(en m³)	(en m³)	(en m³)	(en m³)	(en m³)

Figure 48 : Synthèse des solutions proposées – Scénario AMBITIEUX

Implementing partners



Austrian
Development
Agency



Co-funded by

With funding from
Austrian
Development
Cooperation





Funded by
the European Union

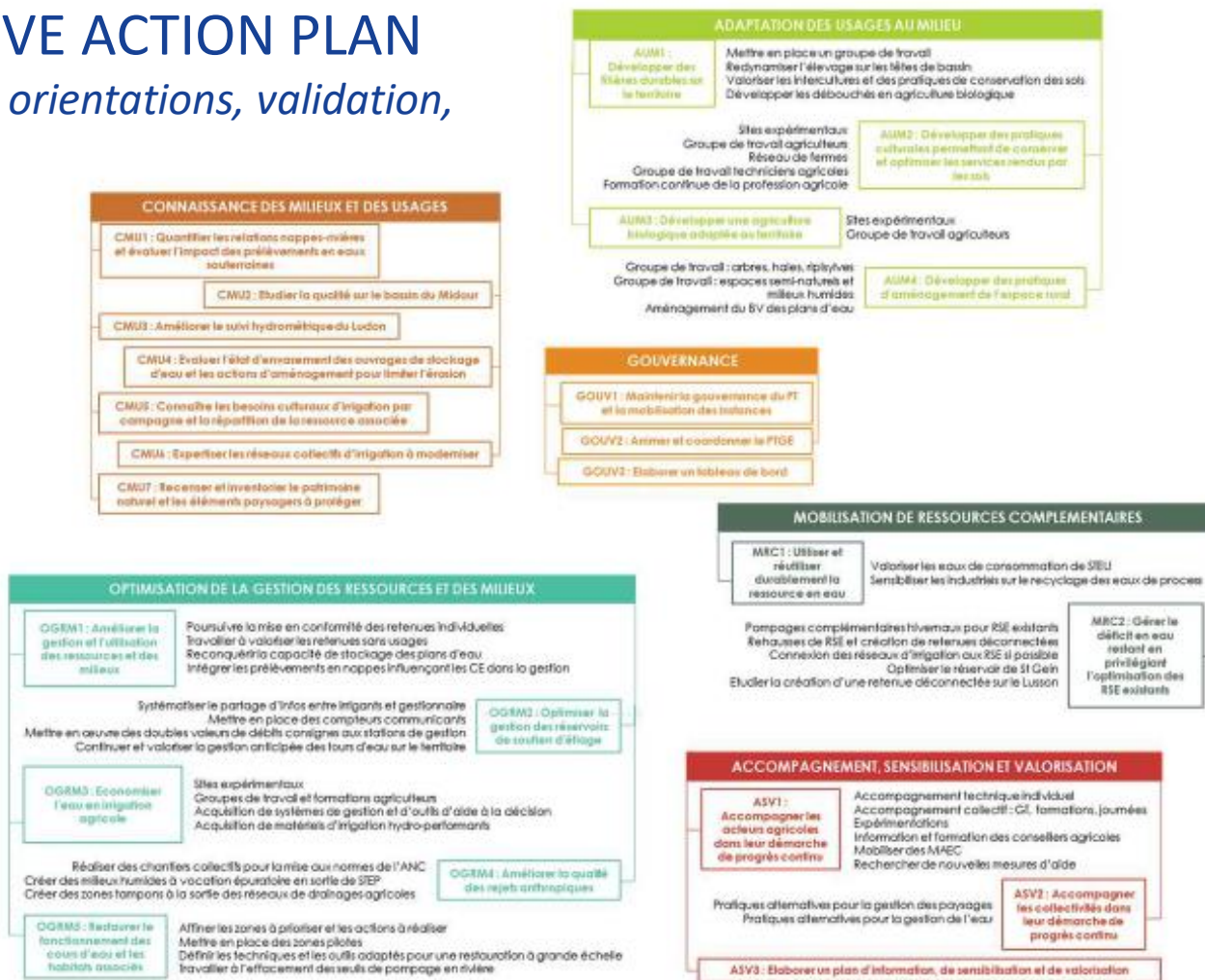
EU4Environment
Water and Data in Eastern Partner Countries

PHASE 3: COLLECTIVE ACTION PLAN

*59 actions according to 6 orientations, validation,
final time schedule*



PROJET DE
TERRITOIRE DU **Midour**



Implementing partners



Co-funded by

With funding from





Funded by
the European Union

EU4Environment
Water and Data in Eastern Partner Countries

PHASE 3: FINAL TIME SCHEDULE



PROJET DE
TERRITOIRE DU **Midour**

INSTITUTION ADOUR
Hautes-Pyrénées - Gers - Landes - Pyrénées-Atlantiques

Implementing partners



Austrian
Development
Agency



Co-funded by

With funding from

Austrian
Development
Cooperation

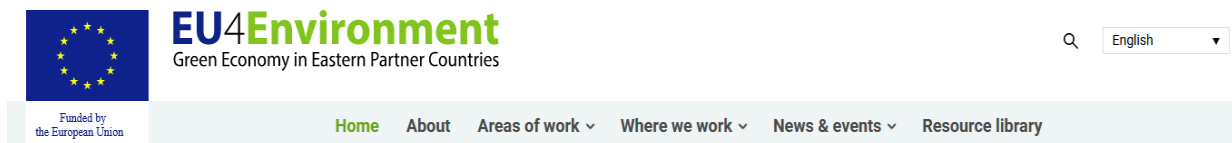




Funded by
the European Union

EU4Environment
Water and Data in Eastern Partner Countries

FOR MORE INFORMATION:



Our work by countries

The "European Union for Environment" (EU4Environment) Programme aims at greening economies in six Eastern Partnership countries :



<https://www.eu4environment.org/>



guillaume.poincheval@gmail.com

Implementing partners



Co-funded by

With funding from





Funded by
the European Union

EU4Environment
Water and Data in Eastern Partner Countries

AN ACTION PLAN FOR RESILIENT AND CONCERTED WATER MANAGEMENT

=> 53 actions to better manage and adapt the ever looming transformation of natural water cycle due to climate change

- ✓ Green Nation France's first ecological planning project
- ✓ Focused on the levers to be unlocked to improve water management, in the short, medium and long term
- ✓ Stakeholder participation at national (National Water Committee) and local (basin committees) levels



A plan built around 3 structural issues

<p>1. Organising SOBRIETY use for all actors</p> <ul style="list-style-type: none"> a.Count b.Plan c.Save 	<p>2. Optimising the AVAILABILITY of the resource</p> <ul style="list-style-type: none"> a.Combating leakage b.Valorising unconventional waters c.Improve or even develop storage in soils, groundwater and structures 	<p>3. Preserve water QUALITY</p> <ul style="list-style-type: none"> a.Preventing diffuse pollution b.Preserving and restoring the great water cycle 	<p>4. Public awareness</p> <ul style="list-style-type: none"> a.General public communication b.A consolidated multi-stakeholder local governance
--	---	---	--

Implementing partners



Co-funded by

